



YETDA INDUSTRY LTD.

**5 mm Blinking Super bright Red LED with resistor chip
B500HSRCR1F-9V**

- 5 mm with Super bright AlGaInP Dice ◦
- Encapsulated with Red diffused Package ◦
- Long Leads ◦
- Built In Blinking I.C (1.5Hz) ◦
- Operating voltage: 9V

Absolute Maximum Ratings :

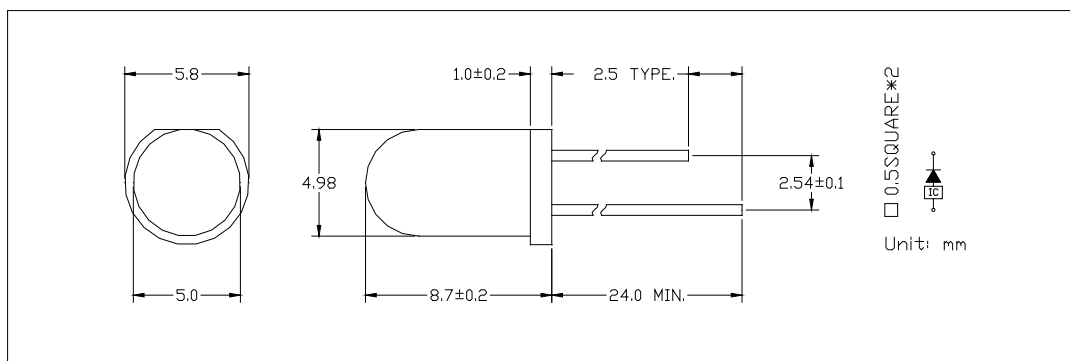
Parameter	Maximum Rating	Unit
Peak Forward Current	90	mA
Continuous Forward Current	30	mA
Operating Temperature Range	-40°C to +85°C	
Storage Temperature Range	-50°C to +100°C	
Lead Soldering Temperature	260°C for 3 seconds 1.6mm(0.063 inch) from body	

Electro-Optical Characteristics (Ta = 25°C)

Parameter Radiant	Test Condition	Symbol	Min.	Typ.	Max.	Unit
Forward Voltage	If = 20mA	Vf		9		V
Luminous Intensity	If = 20mA	Iv		75		mcd
Wavelength	If = 20mA	λp		645		nm
		λd		640		nm
Flash Frequency	If = 20mA	Ftet		1.5		Hz
Half View Angle	If = 20mA	2 θ1/2		60		deg

Package

Item: B500



2016MAR20Y



YETDA INDUSTRY LTD.

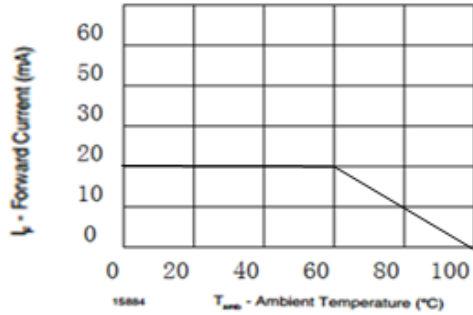


Fig. 1 - Forward Current vs. Ambient Temperature for InGaN

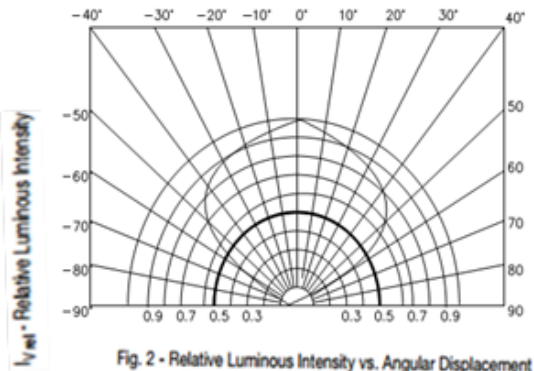


Fig. 2 - Relative Luminous Intensity vs. Angular Displacement

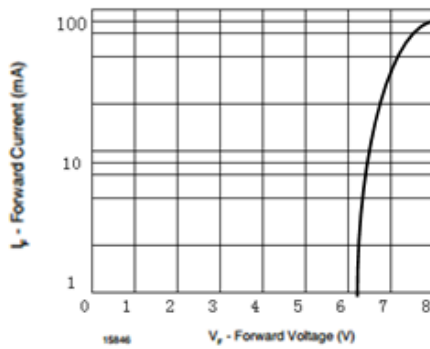


Fig. 3 - Forward Current vs. Forward Voltage

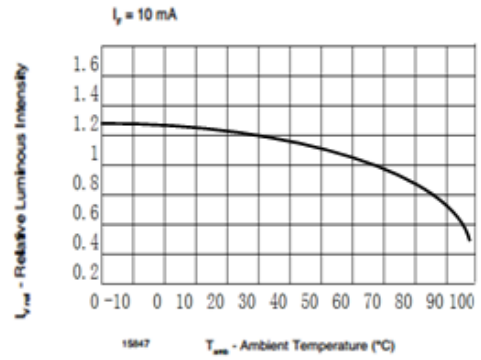


Fig. 4 - Relative Luminous Flux vs. Ambient Temperature

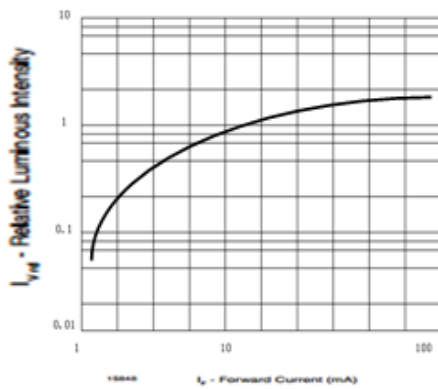


Fig. 5 - Relative Luminous Flux vs. Forward Current

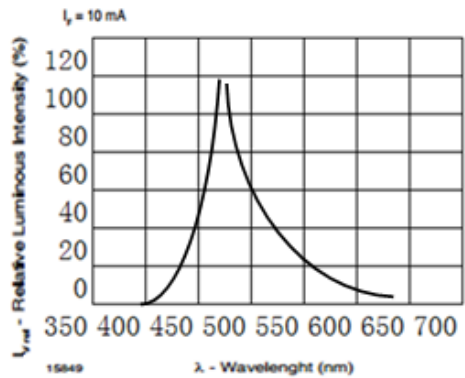


Fig. 6 - Relative Intensity vs. Wavelength



YETDA INDUSTRY LTD.

•Soldering:

1. Manual of soldering

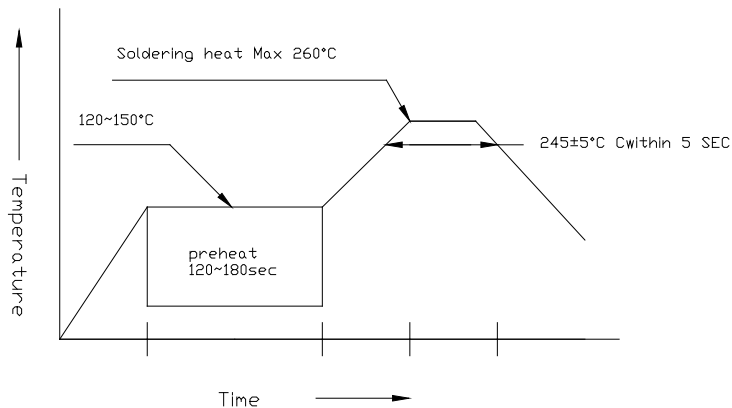
The temperature of the iron tip should not be higher than 260 °C and

Soldering within 3 seconds per solder-land is to be observed

2. DIP soldering (Wave Soldering):

Preheating: 120 °C ~ 150°C within 5 sec. 260°C (Max)

Gradual Cooling (Avoid quenching)



3. Reflow Soldering

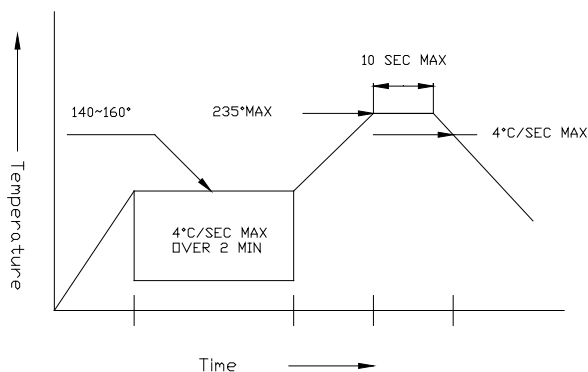
Preheating: 140 °C

~ 160°C ±5°C, within 2 minutes.

Operation heating: 235 °C

235°C (Max) in 10 s

Gradual Cooling (Avoid quenching)



•Handling:

Care must be taken not to cause to the epoxy resin portion of Yetda LEDS while it is exposed to high temperature.

Care must be taken not rub the epoxy resin portion of Yetda LEDS with hard or sharp article such as the sand blast and the metal hook