



YETDA INDUSTRY LTD.

4.8mm Full Color Led Lamps 527RBG2E

4.8mm with Red and Blue and Pure Green Dice,
Encapsulated with Milky color Package,
Blue Dice with Patent.

Absolute Maximum Ratings :

Parameter	Maximum Rating	Unit
Peak Forward Current	120	mA
Continuous Forward Current	30	mA
Operating Temperature Range	- 40 to + 85	
Storage Temperature Range	- 50 to + 100	
Lead Soldering Temperature	260 for 3 seconds 1.6mm(0.063 inch) from body	

Electro-Optical Characteristics (Ta = 25)

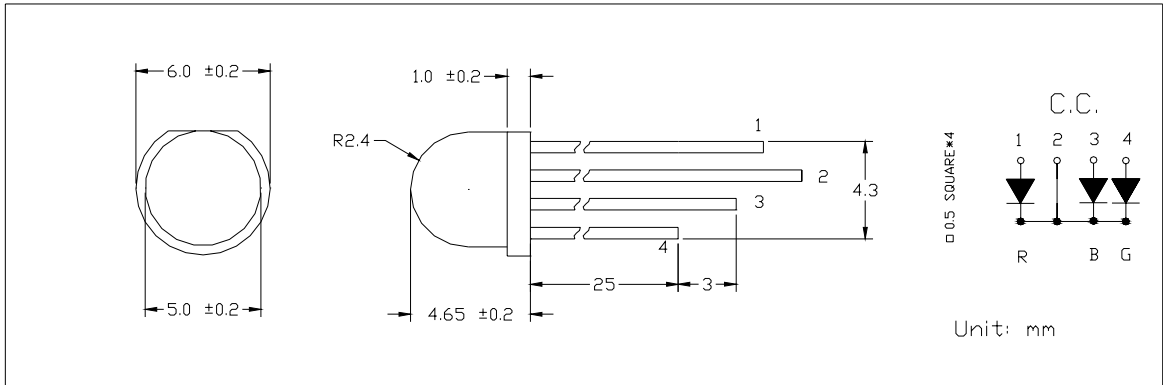
Parameter Radiant	Test Condition	Symbol	Min.	Typ.	Max.	Unit		
Forward Voltage	If = 20mA	Vf	R	1.8	1.9	2.5	V	
			G	3.0	3.2	3.4		
			B	3.0	3.2	3.4		
Reverse Current	Vr = 5V	Ir			10	uA		
Luminous Flux	If = 20mA	O	R	0.9	1.0	1.1	Lm	
			G	2.2	2.3	2.4		
			B	0.4	0.5	0.6		
Spectral Bandwidth	If = 20mA	Δ				nm		
Wavelength	If = 20mA	p	d	R	620	625	630	nm
				G	515	520	526	
				B	465	468	470	
Half View Angle	If = 20mA	2 θ 1/2			160	deg		



YETDA INDUSTRY LTD.

Package

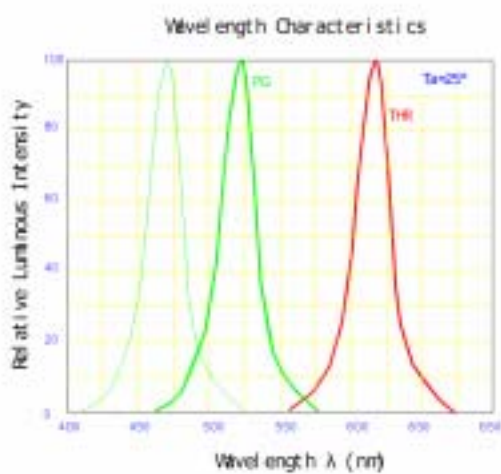
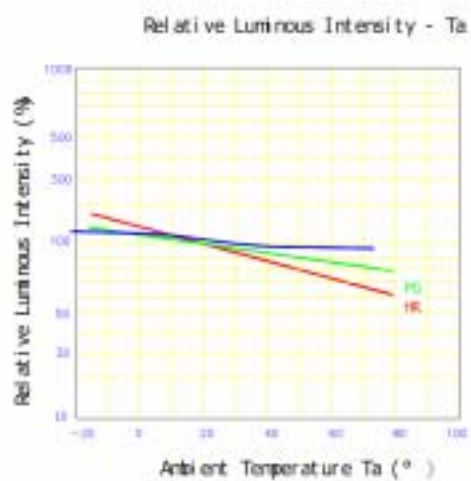
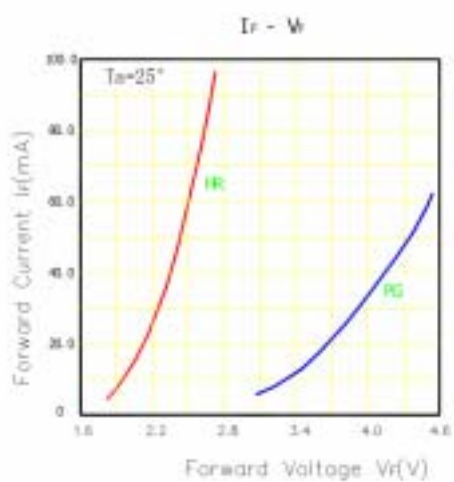
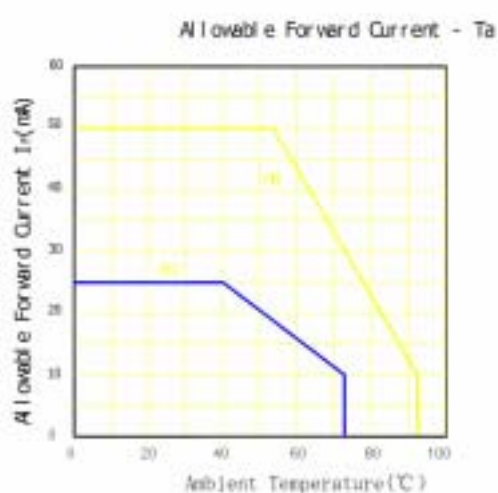
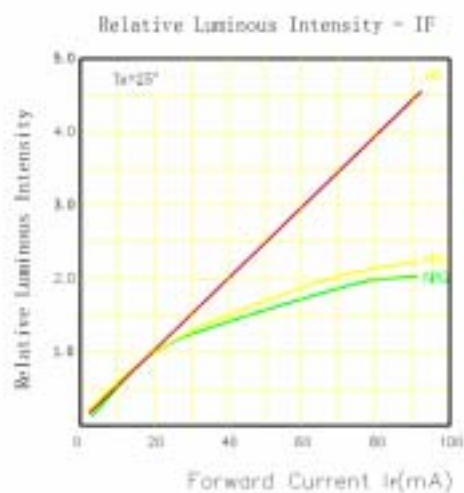
Item: 527RBG





YETDA INDUSTRY LTD.

Typical Electro-Optical Characteristics Curve:





YETDA INDUSTRY LTD.

Soldering:

1. Manual of soldering

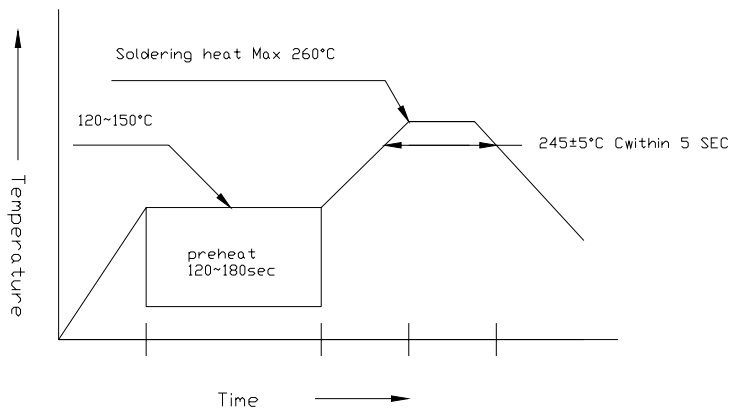
The temperature of the iron tip should not be higher than 260 and

Soldering within 3 seconds per solder-land is to be observed

2. DIP soldering (Wave Soldering):

Preheating: 120 ~150 within 5 sec. 260 (Max)

Gradual Cooling (Avoid quenching)

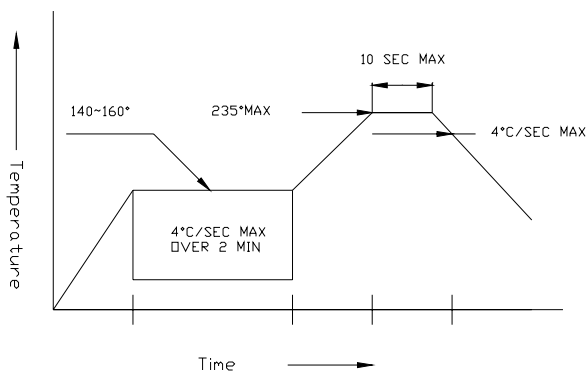


3. Reflow Soldering

Preheating: 140 ~160 ±5 , within 2 minutes.

Operation heating: 235 (Max) within 10 seconds (Max)

Gradual Cooling (Avoid quenching)



Handling:

Care must be taken not to cause to the epoxy resin portion of Yetda LEDS while it is exposed to high temperature.

Care must be taken not rub the epoxy resin portion of Yetda LEDS with hard or sharp article such as the sand blast and the metal hook