



# YETDA INDUSTRY LTD.

## 5mm Infrared LED Lamps I500POC6D-950

- 5 mm with Infrared dice ◦
- Encapsulated with Blue Transparent package ◦
- \* Long leads ◦

### Absolute Maximum Ratings :

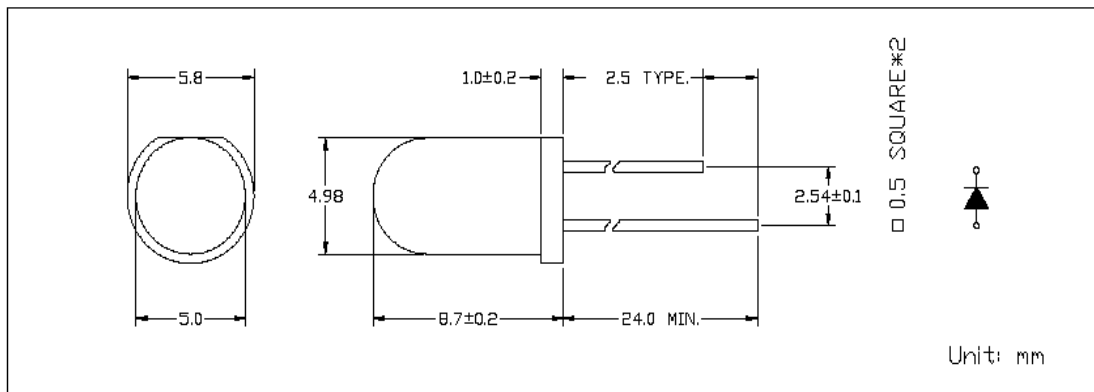
Parameter	Maximum Rating	Unit
Peak Forward Current	120	mA
Continuous Forward Current	40	mA
Operating Temperature Range	-20°C to + 75°C	
Storage Temperature Range	-40°C + 100°C	
Lead Soldering Temperature	260°C for 3 seconds 1.6mm(0.063 inch) from body	

### Electro-Optical Characteristics ( Ta = 25°C )

Parameter Radiant	Test Condition	Symbol	Min.	Typ.	Max.	Unit
Forward Voltage	If = 20mA	Vf		1.19	1.35	V
Forward Voltage	If=100mA,			1.32		V
Reverse Current	Vr = 5V	Ir			10	uA
Radiant Power y	If=20mA	Po	0.5	0.96		mW
Continuous Forward Current	ICF			40		mA
Peak Wavelength	If = 20mA	λ p		950		nm
Viewing Angle	2 θ 1/2			30		deg

### Package

Item: 500



13MAR27H



# YETDA INDUSTRY LTD.

## ■ Typical Electro-Optical Characteristics Curve:

Fig 1. Forward Current vs. Forward Voltage

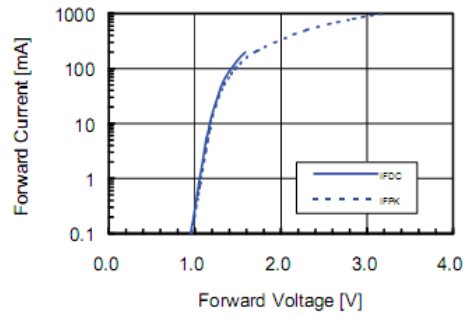


Fig 2. Relative Radiant Power vs. Wavelength

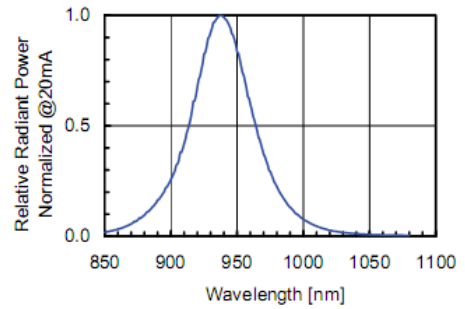


Fig 3. Relative Radiant Power vs. Forward DC Current

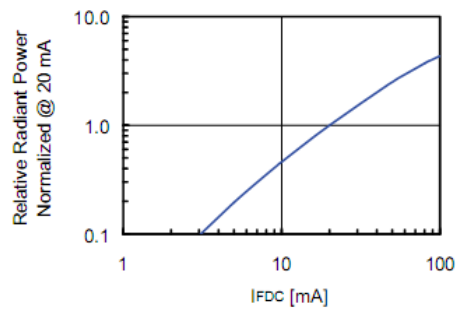


Fig 4. Relative Radiant Power vs. Forward Peak Current

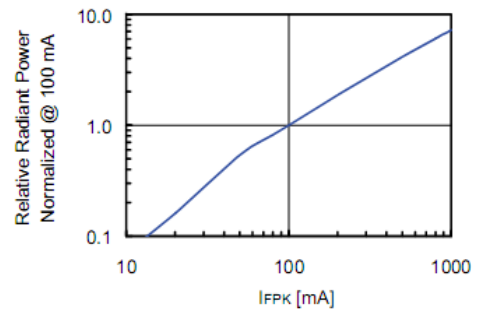


Fig 5. Forward DC Voltage vs. Temperature

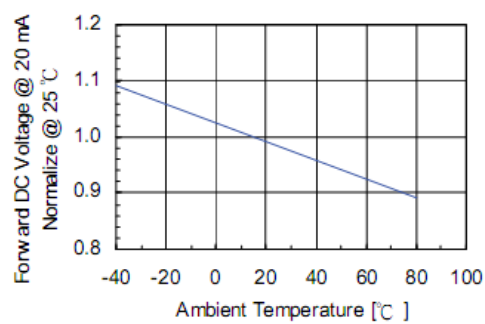


Fig 6. Relative Radiant Power vs. Temperature

