



YETDA INDUSTRY LTD.

3mm Photodiode LED P300XOD5G

- * 3mm with Photodiode Dice.
- * Encapsulated with Black color Package.
- * Long leads.

Absolute Maximum Ratings :

Parameter	Maximum Rating	Unit
Peak Forward Current	150	mA
Continuous Forward Current	30	mA
Operating Temperature Range	- 25°C to + 85°C	
Storage Temperature Range	- 25°C to + 100°C	
Lead Soldering Temperature	260°C for 3 seconds 1.6mm (0.063 inch) from body	

Electro-Optical Characteristics (Ta = 25 °C)

Parameters	Symbol	Min.	Typ.	Max.	Unit	Test Condition
Open-Circuit Voltage	V _{oc}	---	0.40	---	V	Ee=5mW/cm ² λp=940nm
Short-Circuit Current	I _{sc}	---	35	---	μA	Ee=1mW/cm ² λ=940nm
Reverse Light Current	I _L	20	35	---	μA	V _R =5V Ee=1mW/cm ² λ=940nm
Dark Current	I _D	---	5	30	nA	V _R =10V Ee=0mW/m ²
Reverse Breakdown Voltage	B _{VR}	32	170	---	V	I _R =100μA, Ee=0mW/cm ²
Total Capacitance	C _t	---	18	---	pF	Ee=0mW/cm ² V _R =5V f=1MHZ
Rise Time (10% to 90%)	T _r	---	45	---	nS	V _R =10V, R _L =100Ω
Fall Time (90% to 10%)	T _f	---	45	---		
Receiving Angle	2θ _{1/2}	---	80	---	deg.	I _F =20mA

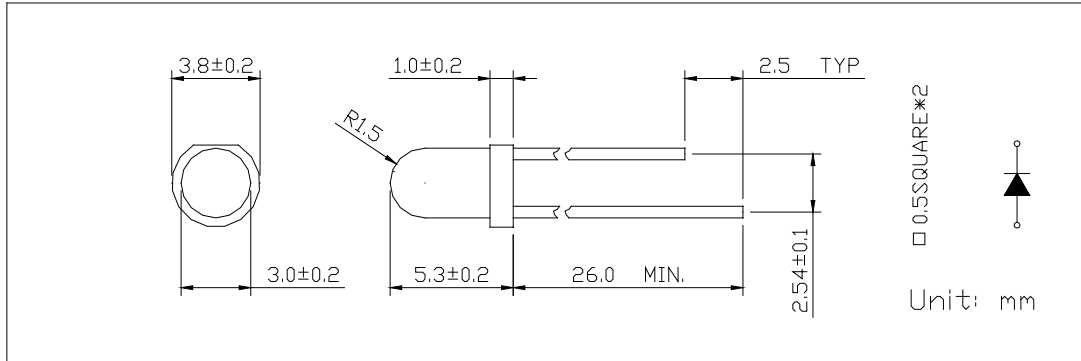
2018JAN12Y



YETDA INDUSTRY LTD.

Package

Item: 300



•Soldering:

1. Manual of soldering

The temperature of the iron tip should not be higher than 260 °C and

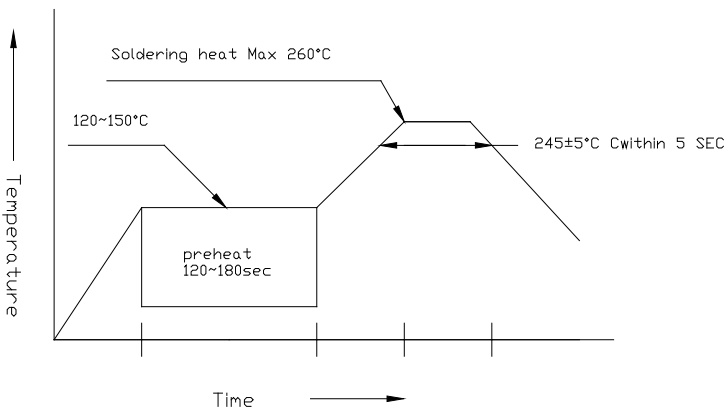
Soldering within 3 seconds per solder-land is to be observed

2. DIP soldering (Wave Soldering):

Preheating: 120

°C ~ 150°C within 5 sec. 260°C (Max)

Gradual Cooling (Avoid quenching)



3. Reflow Soldering

Preheating: 140

°C ~ 160°C ±5°C, within 2 minutes.

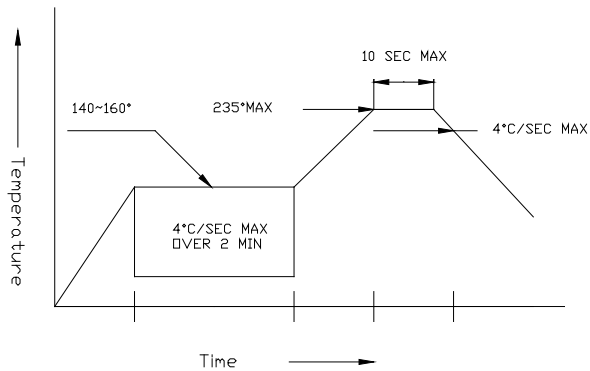
Operation heating: 235

°C (Max) within 10 seconds (Max)

Gradual Cooling (Avoid quenching)



YETDA INDUSTRY LTD.



•Handling:

Care must be taken not to cause to the epoxy resin portion of Yetda LEDS while it is exposed to high temperature.

Care must be taken not rub the epoxy resin portion of Yetda LEDS with hard or sharp article such as the sand blast and the metal hook