

# YETDA INDUSTRY LTD.

## Technical Data Sheet

MODEL NO : Q194OVX4

Package 1.6\*0.8mm\*0.45mm Chip LEDs

Features :

- Package in 8mm tape on 7" diameter reel
- Compatible with automatic placement equipment
- Compatible with reflow solder process

Applications :

- Indicators
- Automotive : backlighting in dashboard and switch
- Backlight for LCD

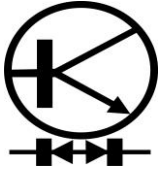
Dice material	Emitted color	Lens Color
AlGaInP/GaAs	Red	Water Clear

Electrical/Optical Characteristics(Ta=25°C)

Parameter	Test Condition	Symbol	Value			Unit
			Min	Typ	Max	
Dominant wavelength	I <sub>F</sub> =20mA	$\lambda_D$		630		nm
Forward voltage	I <sub>F</sub> =20mA	V <sub>F</sub>	1.7		2.5	V
Luminous intensity	I <sub>F</sub> =20mA	I <sub>v</sub>	63	100	200	mcd
Viewing angle at 50% I <sub>v</sub>	I <sub>F</sub> =10mA	2 $\theta$ 1/2		140		Deg
Reverse current	V <sub>R</sub> =5V	I <sub>R</sub>			10	$\mu$ A

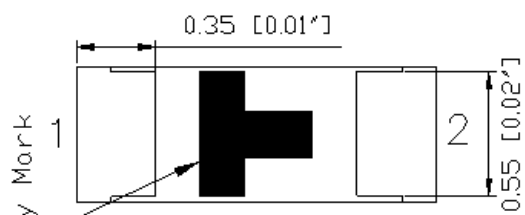
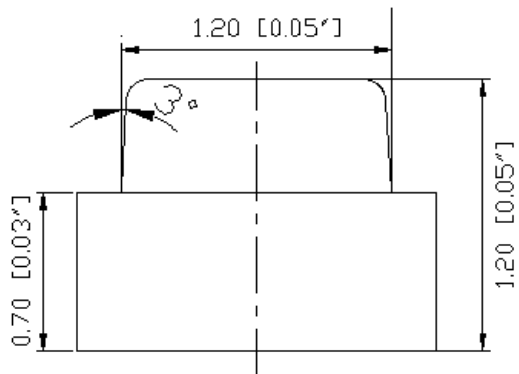
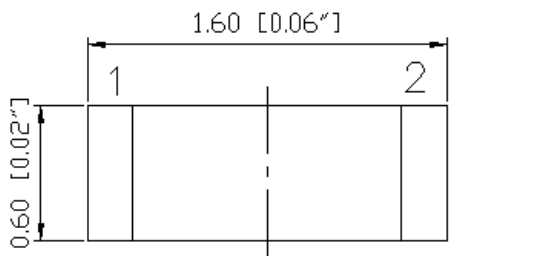
Absolute Maximum Ratings(Ta=25°C)

Parameter	Symbol	Value	Unit
Power dissipation	P <sub>d</sub>	75	mW
Forward current	I <sub>F</sub>	30	mA
Reverse voltage	V <sub>R</sub>	5	V
Operating temperature range	T <sub>op</sub>	-40 ~+80	°C
Storage temperature range	T <sub>stg</sub>	-40 ~+85	°C
Peak pulsing current (1/8 duty f=1kHz)	I <sub>FP</sub>	125	mA



YETDA INDUSTRY LTD.

PACKAGING DIMENSIONS (mm):



Polarity Mark

