



YETDA INDUSTRY LTD.

5mm Yellow Color Super Bright LED Lamps Q500ICY4DF

5mm with AlGaInP Dice ◦

Encapsulated with Water Clear Package with 2 leads ◦

Long Leads ◦

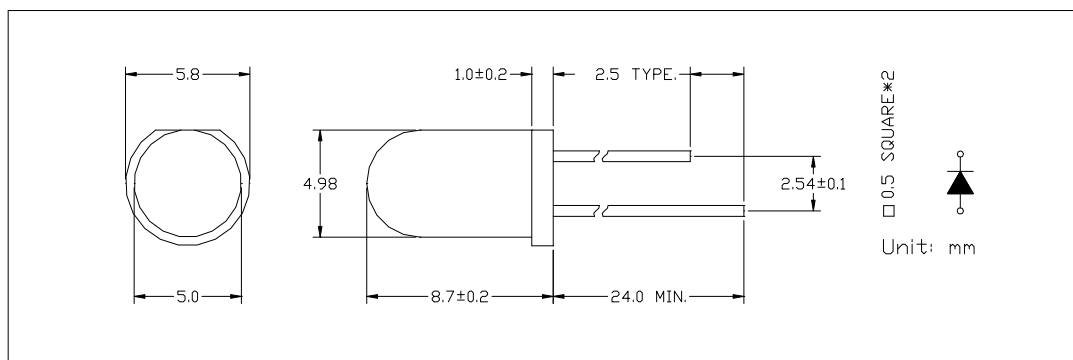
Absolute Maximum Ratings : (Ta=25°C)

Parameter	Symbol	Maximum Rating	Unit
Power Dissipation	PD	100	mw
Reverse Voltage	VR	5	V
Average Forward Current	LAF	30	mA
Peak Forward Current (Duty=0.1,10KHZ)	IPF	200	mA
Opertating Temperature Range	TOPR	-20℃ to +80 ℃	
Storage Temperature Range	TSTG	-40℃ to +100 ℃	
Lead Soldering Temperature {1.6mm(0.063inch) From Body} 260℃ For 3 Seconds			

Electro-Optical Characteristics (Ta = 25°C)

Parameter	Test Condition	Symbol	Min.	Typ.	Max.	Unit
Forward Voltage	IF = 20mA	VF	1.8	2.2	2.4	V
Reverse Current	VR =5V	IR			10	uA
Luminous Intensity	IF = 20mA	Iv		2000		mcd
Wavelength	IF = 20mA	λ	590	592	595	nm
Viewing Angle	IF = 20mA	2 θ 1/2		60		deg

Item: 500



14JULY26W



YETDA INDUSTRY LTD.

Typical Electro-Optical Characteristics Curve:

Fig 1. Forward Current vs. Forward Voltage

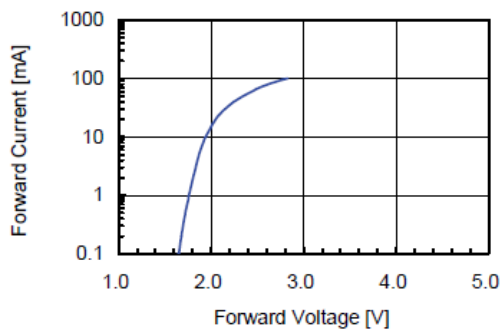


Fig 2. Relative Intensity vs. Forward Current

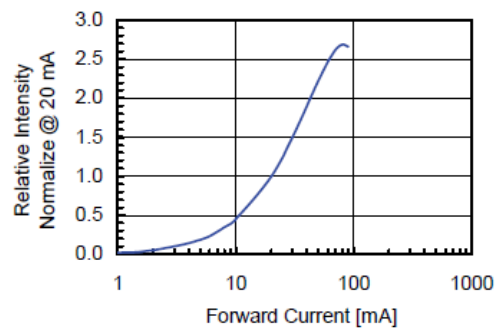


Fig 3. Forward Voltage vs. Temperature

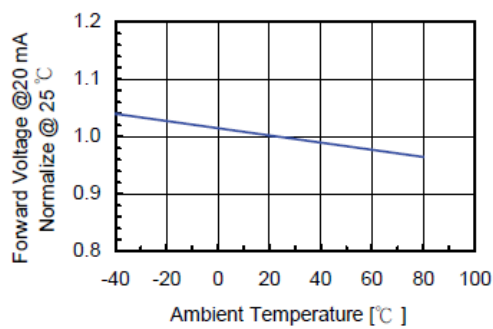


Fig 4. Relative Intensity vs. Temperature

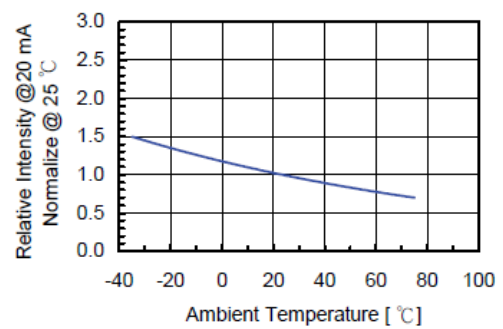
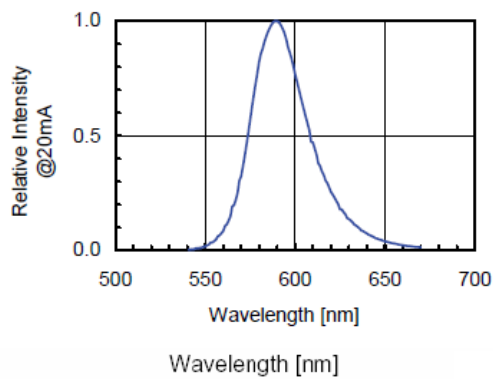


Fig 5. Relative Intensity vs. Wavelength





YETDA INDUSTRY LTD.

Soldering:

1. Manual of soldering

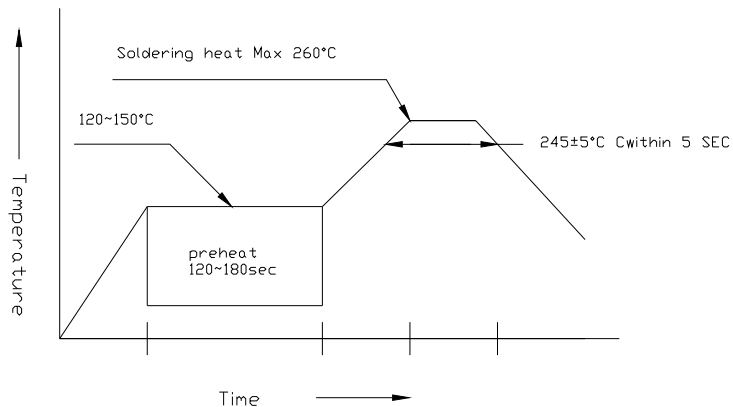
The temperature of the iron tip should not be higher than 260°C and

Soldering within 3 seconds per solder-land is to be observed

2. DIP soldering (Wave Soldering):

Preheating: 120°C~150°C within 5 sec. 260°C (Max)

Gradual Cooling (Avoid quenching)



•Handling:

Care must be taken not to cause to the epoxy resin portion of Yetda LEDS while it is exposed to high temperature.

Care must be taken not rub the epoxy resin portion of Yetda LEDS with hard or sharp article such as the sand blast and the metal hook