



# YETDA INDUSTRY LTD.

## 5mm Red Super Bright LED Lamps Q500NOI4D+-TB

- 5mm with AlGaInP Dice ◦
- Encapsulated with Water Clear Package ◦
- Two Leads with stopper ◦

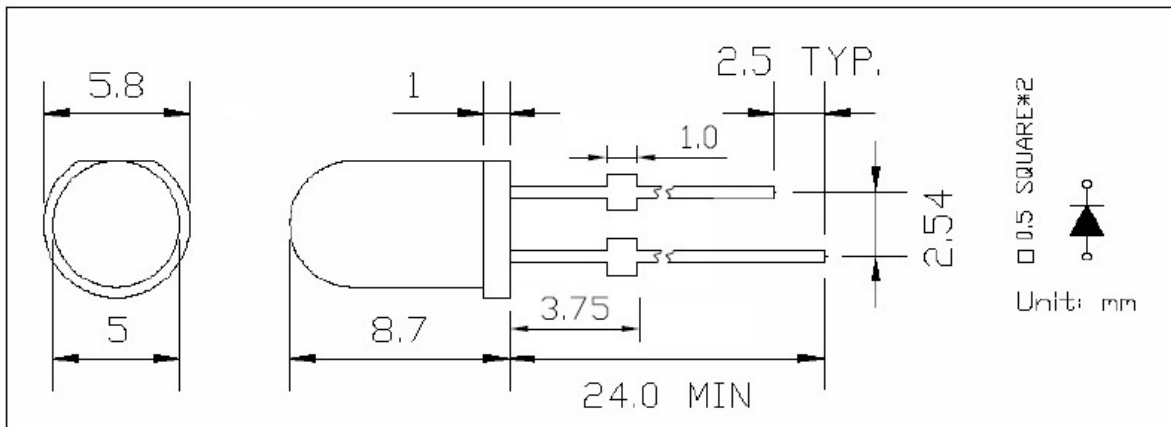
### Absolute Maximum Ratings : ( Ta=25°C )

Parameter	Symbol	Maximum Rating	Unit
Power Dissipation	PD	50	mw
Reverse Voltage	VR	5	V
Average Forward Current	LAF	20	mA
Peak Forward Current (Duty=0.1,10KHZ)	IPF	100	mA
Operatating Temperature Range	TOPR	-20°C to +80 °C	
Storage Temperature Range	TSTG	-40°C to +100 °C	
Lead Soldering Temperature { 1.6mm(0.063inch) From Body } 260°C For 3 Seconds			

### Electro-Optical Characteristics ( Ta = 25°C )

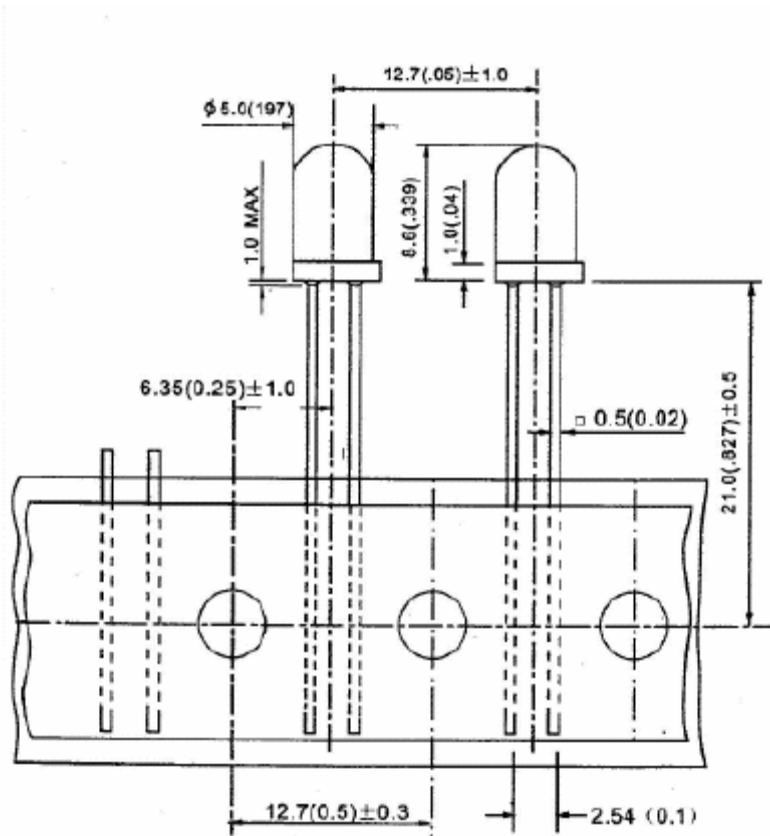
Parameter	Test Condition	Symbol	Min.	Typ.	Max.	Unit
Forward Voltage	IF = 20mA	VF		2.0	2.4	V
Reverse Current	VR = 5V	IR			10	uA
Luminous Intensity	IF = 20mA	Iv	4200		8500	mcd
Wavelength	IF = 20mA	λ	620	625	630	nm
Viewing Angle	IF = 20mA	2θ 1/2		30		deg

Item: 500+





YETDA INDUSTRY LTD.

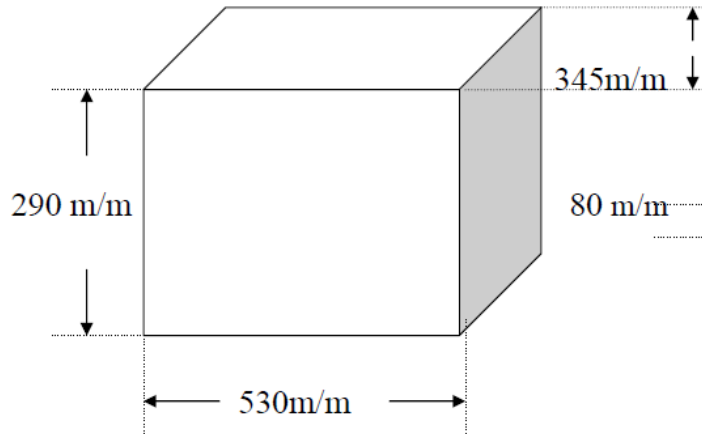




YETDA INDUSTRY LTD.

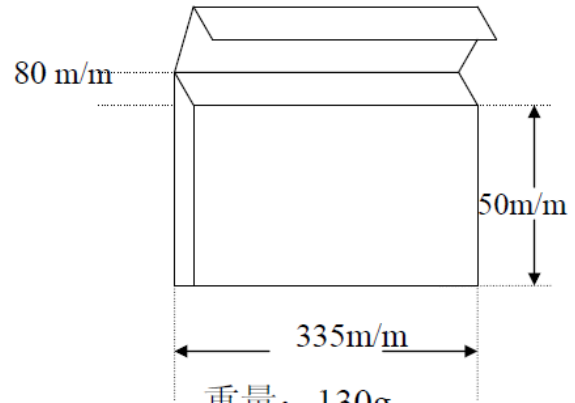
**L.E.D折叠式外箱、内盒包装规范**

**外箱尺寸： 290\*345\*530**



重量： 850g

**内盒尺寸： 335\*250\*50**



重量： 130g

**包装形式： 折叠式包装 (T/B)**

**包装数量： T/B3  $\phi$ 、 2500Pcs**

**T/B5  $\phi$ 、 2000Pcs**

**(每 10 小盒装一大箱) 外箱**



# YETDA INDUSTRY LTD.

## Typical Electro-Optical Characteristics Curve:

Fig 1. Forward Current vs. Forward Voltage

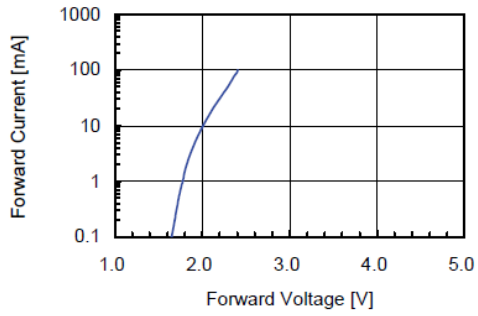


Fig 2. Relative Intensity vs. Forward Current

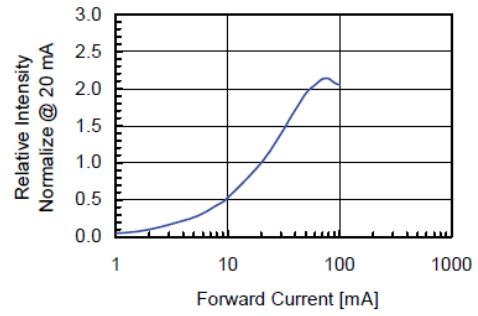


Fig 3. Forward Voltage vs. Temperature

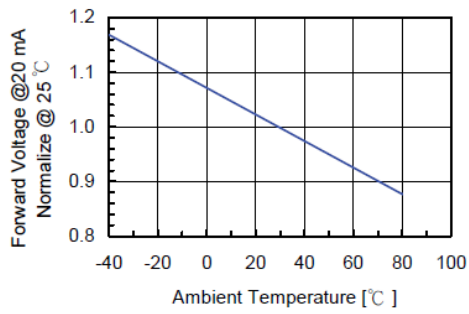


Fig 4. Relative Intensity vs. Temperature

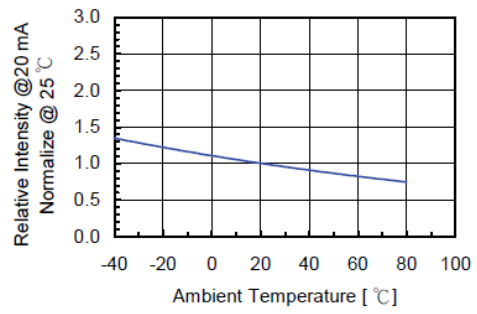
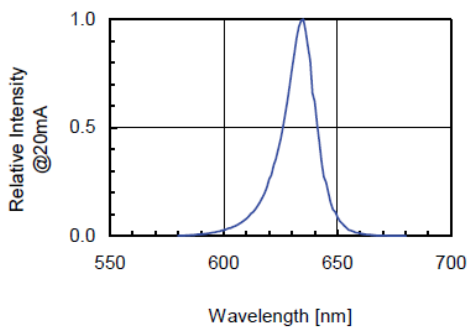


Fig 5. Relative Intensity vs. Wavelength





# YETDA INDUSTRY LTD.

## Soldering:

### 1. Manual of soldering

The temperature of the iron tip should not be higher than 260 °C and

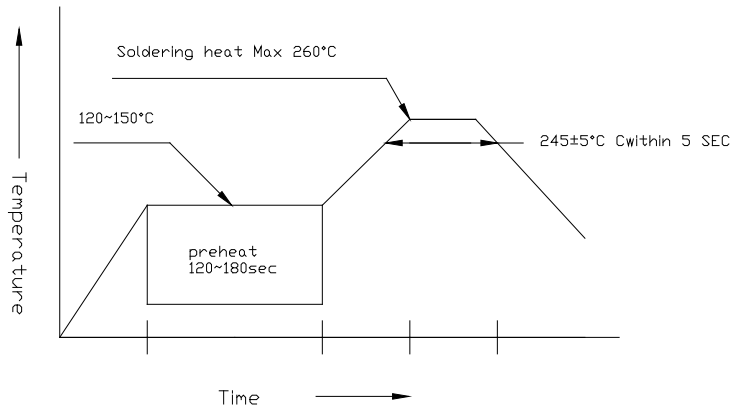
Soldering within 3 seconds per solder-land is to be observed

### 2. DIP soldering (Wave Soldering):

Preheating: 120

°C ~ 150°C within 5 sec. 260°C (Max)

Gradual Cooling (Avoid quenching)



## •Handling:

Care must be taken not to cause to the epoxy resin portion of Yetda LEDs while it is exposed to high temperature.

Care must be taken not rub the epoxy resin portion of Yetda LEDs with hard or sharp article such as the sand blast and the metal hook