



# YETDA INDUSTRY LTD.

## Technical Data Sheet

**MODEL NO : S3020ANW4-G**

**Package 3.0\*2.0\*1.3 mm Top LEDs**

Features :

- Compatible with automatic placement equipment
- Compatible with reflow solder process

Applications :

- Indicators
- Automotive : backlighting in dashboard and switch
- Backlight for LCD

Dice material	Emitted color	Lens Color
InGaN	White	Yellow diffused

Electrical/Optical Characteristics(Ta=25°C)

Parameter	Test Condition	Symbol	Value			Unit
			Min	Typ	Max	
Chromaticity Coordinates	I <sub>F</sub> =20mA	X		0.31		-
		Y		0.32		-
Luminous intensity	I <sub>F</sub> =20mA	IV	1000	1500	2500	-
Forward voltage	I <sub>F</sub> =20mA	V <sub>F</sub>	2.8		3.7	V
Viewing angle	I <sub>F</sub> =20mA	2 θ 1/2		120		Deg
Reverse current	V <sub>R</sub> =5V	I <sub>R</sub>			10	μA

Absolute Maximum Ratings(Ta=25°C)

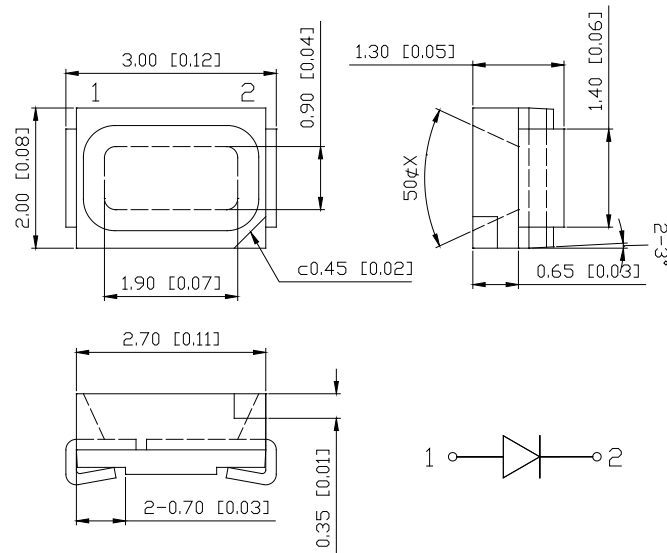
Parameter	Symbol	Value	Unit
Power dissipation	P <sub>d</sub>	111	mW
Forward current	I <sub>F</sub>	30	mA
Reverse voltage	V <sub>R</sub>	5	V
Operating temperature range	T <sub>op</sub>	-40 ~+80	°C
Storage temperature range	T <sub>stg</sub>	-40 ~+85	°C
Peak pulsing current (1/8 duty f=1kHz)	I <sub>fp</sub>	125	mA



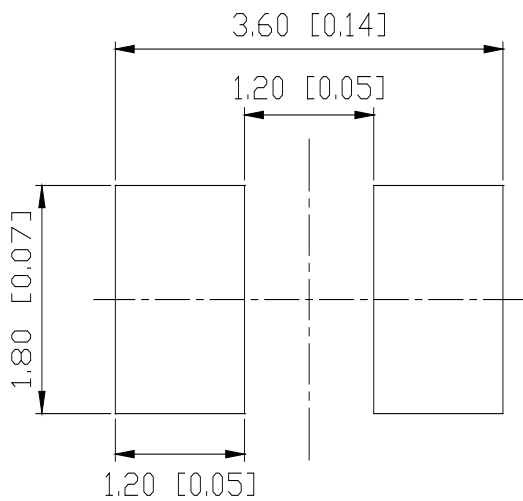
# YETDA INDUSTRY LTD.

2016MAY28Y

## PACKAGING DIMENSIONS



## RECOMMEND PAD LAYOUT





# YETDA INDUSTRY LTD.

## Typical Electro-Optical Characteristics Curve:

Fig 1. Forward Current vs. Forward Voltage

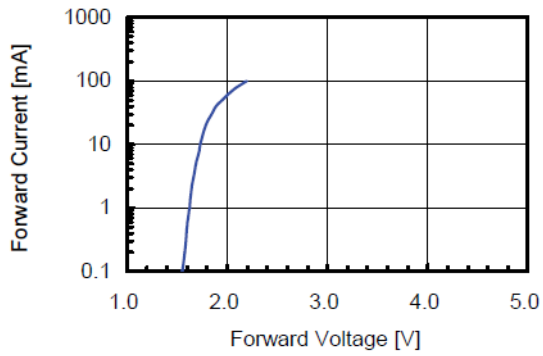


Fig 2. Relative Intensity vs. Forward Current

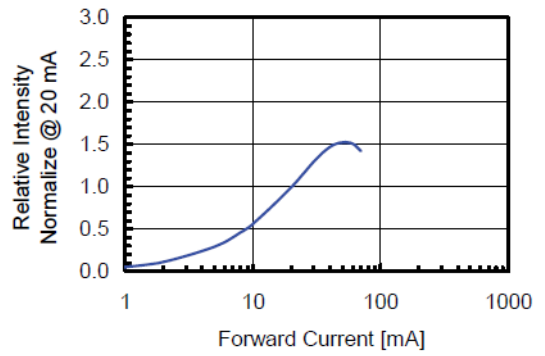


Fig 3. Forward Voltage vs. Temperature

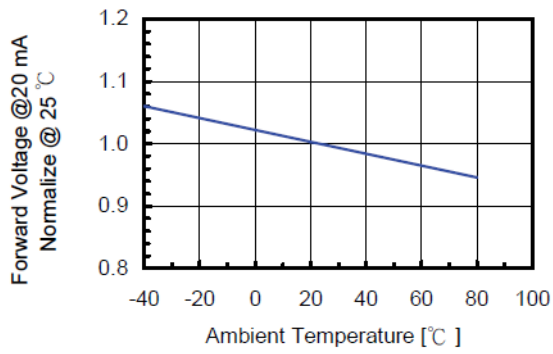
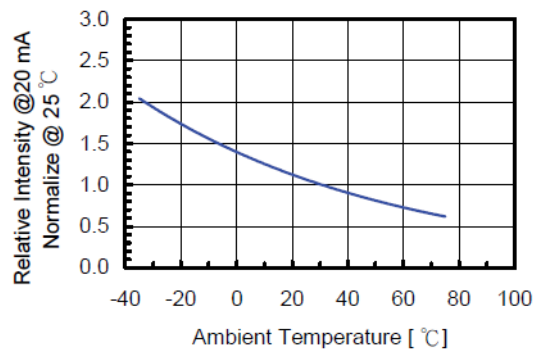


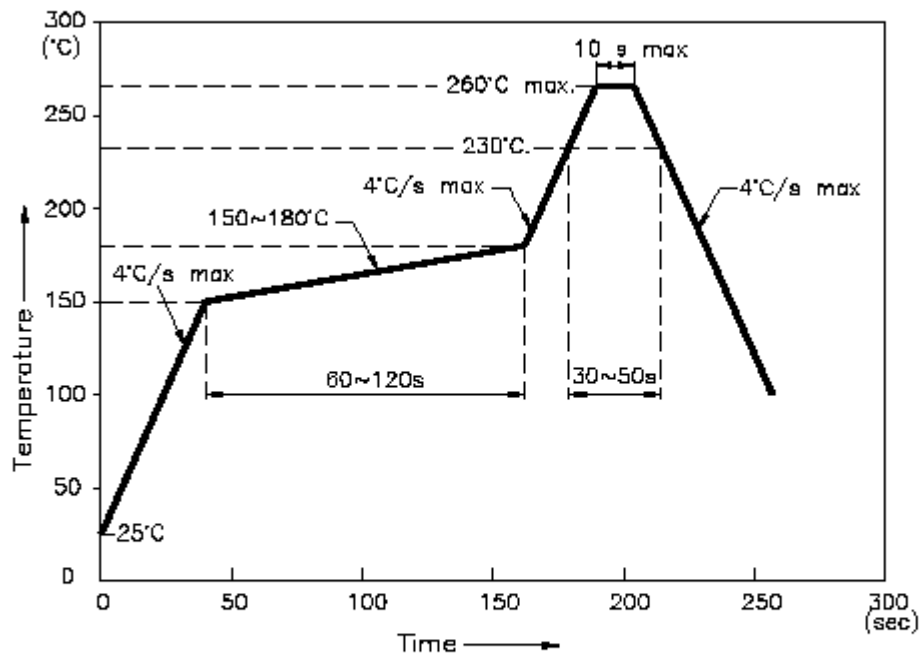
Fig 4. Relative Intensity vs. Temperature





## Soldering Profile

Reflow Soldering Profile For Lead-free SMT Process.



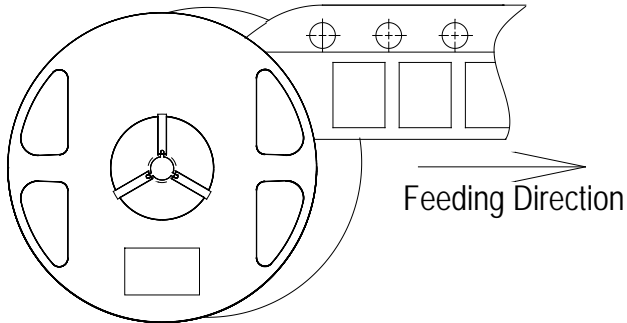
### NOTES:

1. We recommend the reflow temperature  $245^{\circ}\text{C}(\pm 5^{\circ}\text{C})$ . The maximum soldering temperature should be limited to  $260^{\circ}\text{C}$ .
2. Don't cause stress to the epoxy resin while it is exposed to high temperature.
3. Number of reflow process shall be 2 times or less.

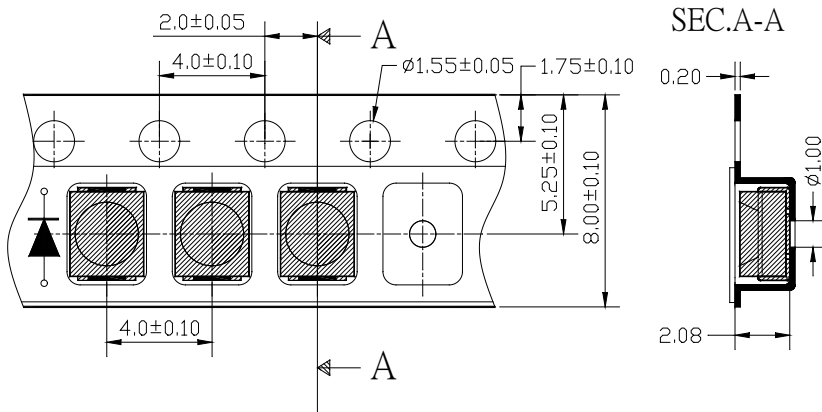


# YETDA INDUSTRY LTD.

## ■Feeding Direction



## ■Dimensions of Tape (Unit: mm)



## ■Arrangement of Tape

Notes:

1. Empty component pockets are sealed with top cover tape;
2. The maximum number of missing lamps is two;
3. The cathode is oriented towards the tape sprocket hole;
4. 3,000pcs/Reel