



# YETDA INDUSTRY LTD.

## Technical Data Sheet

**MODEL NO : S776JNB4-G**

**Package 3.2\*2.7\*1.8 mm Top LEDs**

**Features :**

- Lens Molding
- Compatible with automatic placement equipment
- Compatible with reflow solder process

**Applications :**

- Indicators
- Automotive : backlighting in dashboard and switch
- Backlight for LCD

Dice material	Emitted color	Lens Color
InGaN	Blue	Water transparent

**Electrical/Optical Characteristics(Ta=25°C)**

Parameter	Test Condition	Symbol	Value			Unit
			Min	Typ	Max	
Wavelength at peak emission	IF=30mA	$\lambda$ peak		465		nm
Dominant wavelength	IF=30mA	$\lambda$ D	465	470	475	nm
Forward voltage	IF=30mA	VF	2.8	3.2	3.7	V
Luminous intensity	IF=30mA	Iv	250	470	800	mcd
Viewing angle at 50% Iv	IF=10mA	2 $\theta$ 1/2		120		Deg
Reverse current	VR=5V	IR			10	$\mu$ A

**Absolute Maximum Ratings(Ta=25°C)**

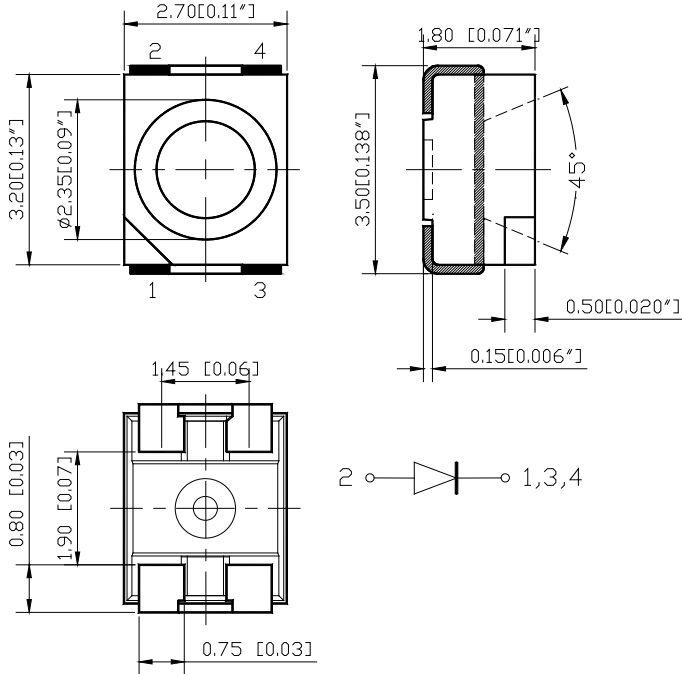
Parameter	Symbol	Value	Unit
Power dissipation	Pd	185	mW
Forward current	IF	50	mA
Reverse voltage	VR	5	V
Operating temperature range	Top	-40 ~+80	°C
Storage temperature range	Tstg	-40 ~+85	°C
Peak pulsing current (1/8 duty f=1kHz)	I <sub>fp</sub>	125	mA

2016APR08Y

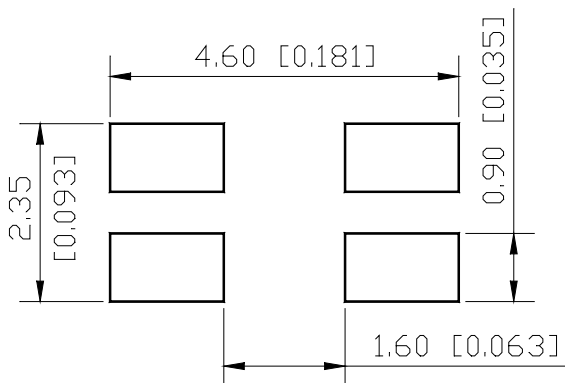


YETDA INDUSTRY LTD.

## PACKAGING DIMENSIONS



## RECOMMEND PAD LAYOUT





Typical Electro-Optical Characteristics Curve:

Fig 1. Forward Current vs. Forward Voltage

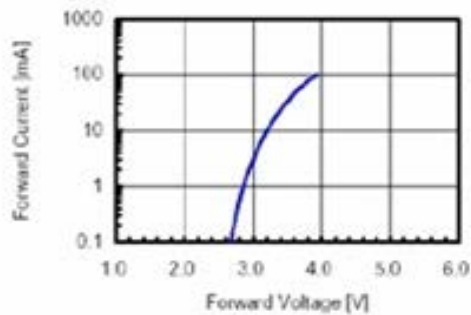


Fig 2. Relative Intensity vs. Forward Current

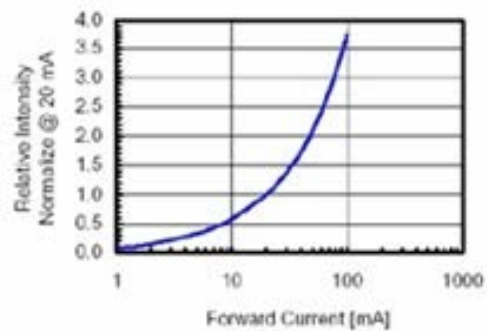


Fig 3. Forward Voltage vs. Temperature

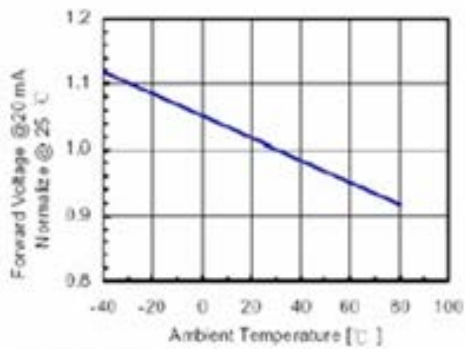


Fig 4. Relative Intensity vs. Temperature

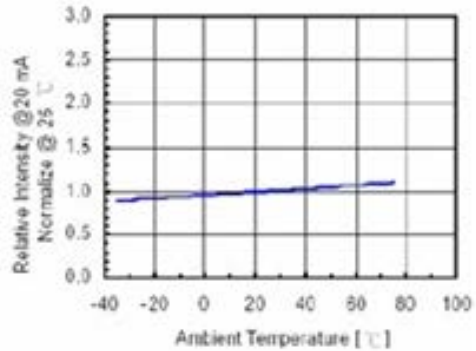
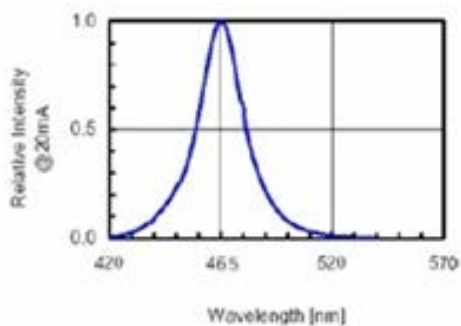


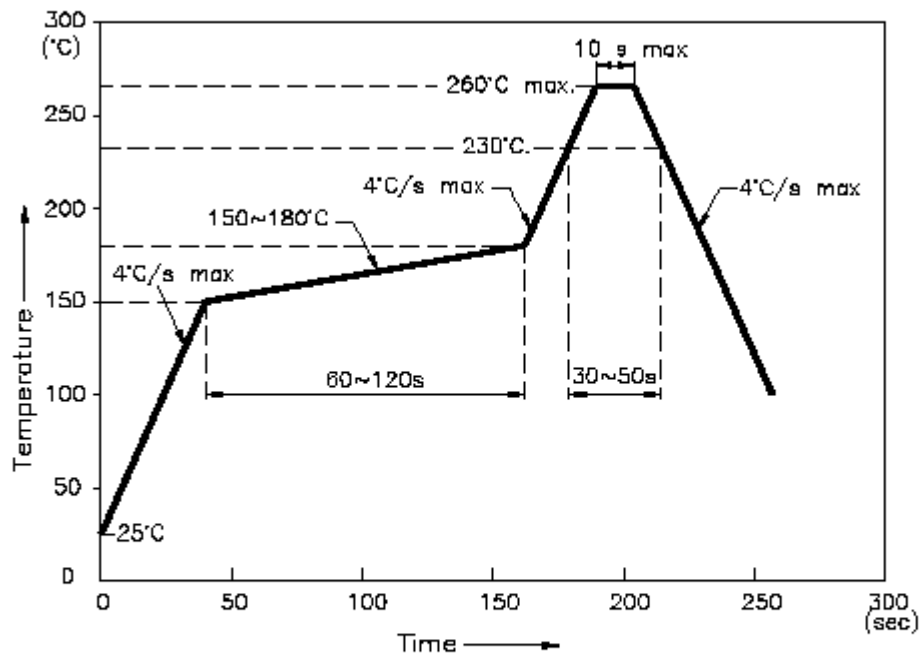
Fig 5. Relative Intensity vs. Wavelength





## Soldering Profile

Reflow Soldering Profile For Lead-free SMT Process.



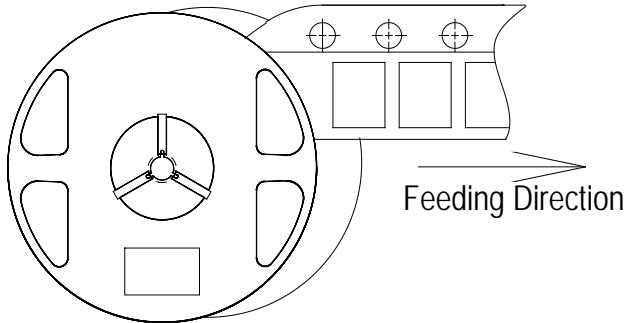
### NOTES:

1. We recommend the reflow temperature  $245^{\circ}\text{C}(\pm 5^{\circ}\text{C})$ . The maximum soldering temperature should be limited to  $260^{\circ}\text{C}$ .
2. Don't cause stress to the epoxy resin while it is exposed to high temperature.
3. Number of reflow process shall be 2 times or less.

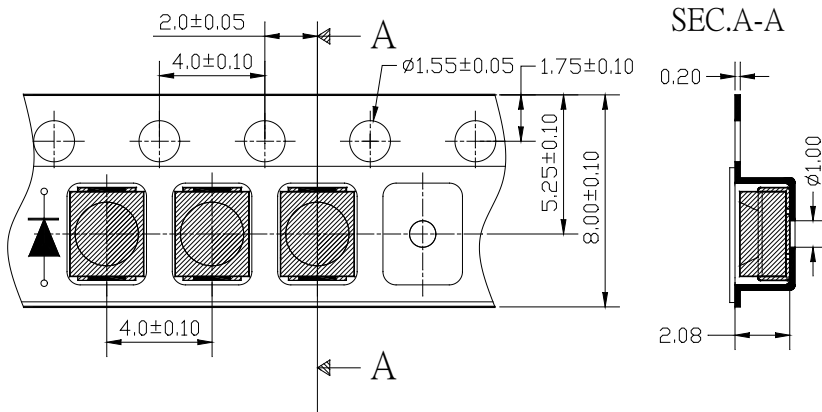


# YETDA INDUSTRY LTD.

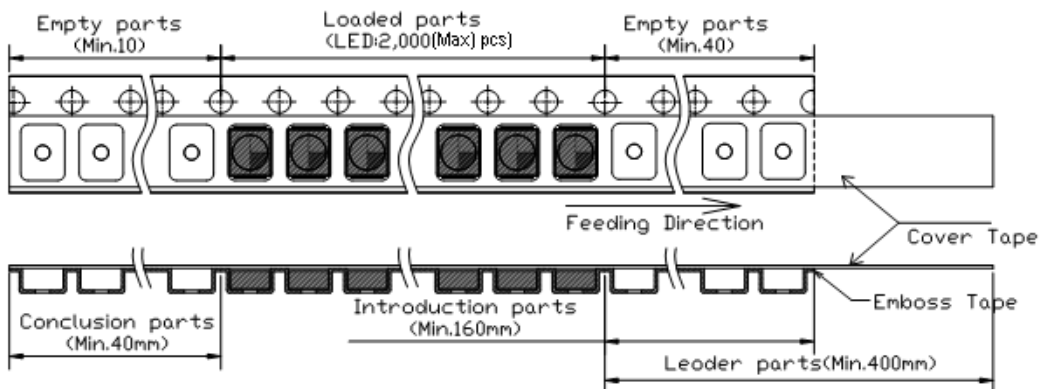
## ■Feeding Direction



## ■Dimensions of Tape (Unit: mm)



## ■Arrangement of Tape



Notes:

1. Empty component pockets are sealed with top cover tape;
2. The maximum number of missing lamps is two;
3. The cathode is oriented towards the tape sprocket hole;
4. 2,000pcs/Reel