



# YETDA INDUSTRY LTD.

## 5mm Blue LED Lamps 500TB4D

5mm with blue Dice,

Encapsulated with Water Clear Package,

Long Leads.

### Absolute Maximum Ratings :

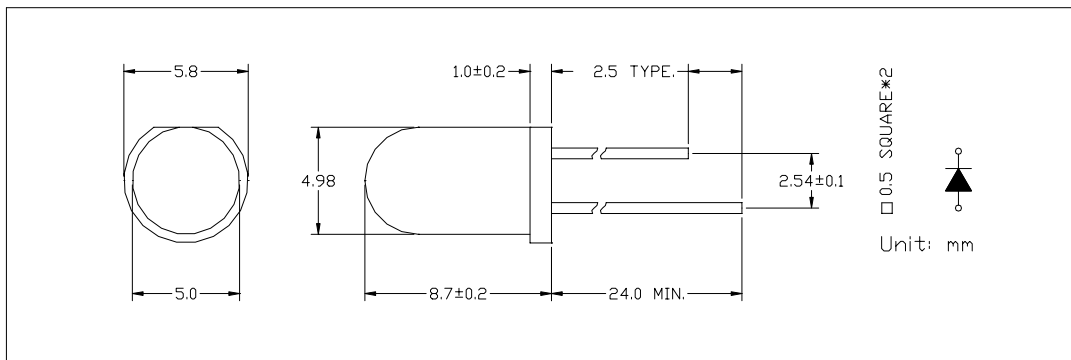
Parameter	Maximum Rating	Unit
Peak Forward Current	120	mA
Continuous Forward Current	30	mA
Operating Temperature Range	- 40 to + 85	
Storage Temperature Range	- 50 to + 100	
Lead Soldering Temperature	260 for 3 seconds 1.6mm(0.063 inch) from body	

### Electro-Optical Characteristics ( Ta = 25 )

Parameter Radiant	Test Condition	Symbol	Min.	Typ.	Max.	Unit
Forward Voltage	If = 20mA	Vf	3.0	3.4	4.0	V
Reverse Current	Vr = 100V	Ir			10	uA
Luminous Intensity (B1)	If = 20mA	Iv				mcd
Luminous Intensity (B2)	If = 20mA	Iv	400		700	mcd
Luminous Intensity (B3)	If = 20mA	Iv	700		1100	mcd
Luminous Intensity (B4)	If = 20mA	Iv	1100		1500	mcd
Spectral Bandwidth	If = 20mA	$\Delta\lambda$		10		nm
Wavelength	If = 20mA	$\lambda_p$	460	470		nm
		$\lambda_d$				nm
Half View Angle	If = 20mA	2 $\theta_{1/2}$		30		deg

### Package

Item: 500



20090504