



YETDA INDUSTRY LTD.

S306TW4G 3mm Round White Color LED Lamps

- * 3mm round white color LED.
- * Encapsulated with Water Clear Package with 2 leads.
- * Long Leads

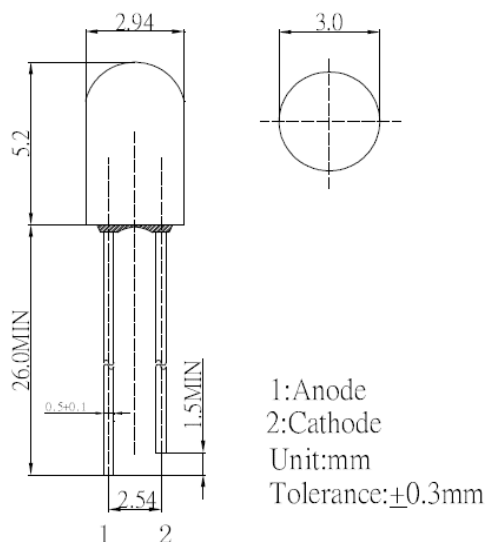
Absolute Maximum Ratings : (Ta=25°C)

Parameter	Symbol	White	Unit
Power Dissipation	PD	108	mw
Reverse Voltage	VR	5	V
Average Forward Current	LAF	30	mA
Peak Forward Current (Duty=0.1,10KHZ)	IPF	200	mA
Operatating Temperature Range	TOPR	-20°C to +80 °C	
Storage Temperature Range	TSTG	-40°C to +100 °C	
Lead Soldering Temperature { 1.6mm(0.063inch) From Body } 260°C For 3 Seconds			

Electro-Optical Characteristics (Ta = 25°C)

Parameter	Test Condition	Symbol	Min.	Typ.	Max.	Unit
Forward Voltage	IF = 20mA	VF	2.9		3.6	V
Reverse Current	VR = 5V	IR			10	uA
Luminous Intensity	IF = 20mA	Iv	7000	8400		mcd
Chromaticity Coordinates	IF = 20mA	X		0.27		
		Y		0.28		
Viewing Angle	IF = 20mA	2θ 1/2		20		deg

■ Outline Dimension





YETDA INDUSTRY LTD.

◆ Forward Voltage Combination (V at 20mA)

Rank	VF(V)		Condition
	Min	Max	
F2G1	2.8	3.0	IF=20mA
G2H1	3.0	3.2	
H2I1	3.2	3.4	
I2J1	3.4	3.6	

Tolerance:±0.1V

◆ Luminous Intensity Combination (mcd at 20mA)

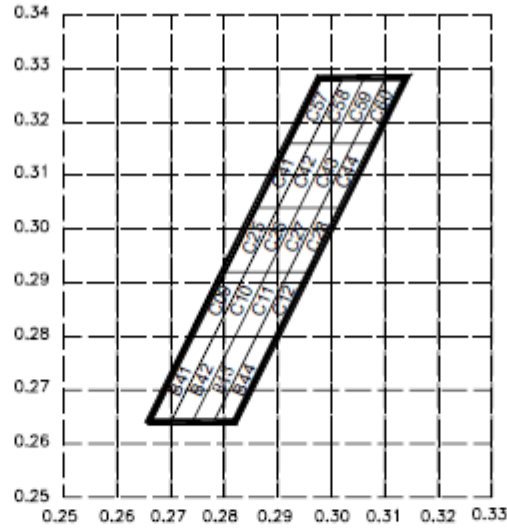
Rank	IV(mcd)		Condition
	Min	Max	
P	7000	8000	IF=20mA
P1	8000	9000	

Tolerance:±15%



YETDA INDUSTRY LTD.

Color Combination (at 20mA)



B41	X	0.266	0.274	0.278	0.270	C27	X	0.288	0.294	0.298	0.292
	Y	0.264	0.280	0.280	0.264		Y	0.292	0.304	0.304	0.292
B42	X	0.270	0.278	0.282	0.274	C28	X	0.292	0.298	0.302	0.296
	Y	0.264	0.280	0.280	0.264		Y	0.292	0.304	0.304	0.292
B43	X	0.274	0.282	0.286	0.278	C41	X	0.286	0.292	0.296	0.290
	Y	0.264	0.280	0.280	0.264		Y	0.304	0.316	0.316	0.304
B44	X	0.278	0.286	0.290	0.282	C42	X	0.290	0.296	0.300	0.294
	Y	0.264	0.280	0.280	0.264		Y	0.304	0.316	0.316	0.304
C09	X	0.274	0.280	0.284	0.278	C43	X	0.294	0.300	0.304	0.298
	Y	0.280	0.292	0.292	0.280		Y	0.304	0.316	0.316	0.304
C10	X	0.278	0.284	0.288	0.282	C44	X	0.298	0.304	0.308	0.302
	Y	0.280	0.292	0.292	0.280		Y	0.304	0.316	0.316	0.304
C11	X	0.282	0.288	0.292	0.286	C57	X	0.292	0.298	0.302	0.296
	Y	0.280	0.292	0.292	0.280		Y	0.316	0.328	0.328	0.316
C12	X	0.286	0.292	0.296	0.290	C58	X	0.296	0.302	0.306	0.300
	Y	0.280	0.292	0.292	0.280		Y	0.316	0.328	0.328	0.316
C25	X	0.280	0.286	0.290	0.284	C59	X	0.300	0.306	0.310	0.304
	Y	0.292	0.304	0.304	0.292		Y	0.316	0.328	0.328	0.316
C26	X	0.284	0.290	0.294	0.288	C60	X	0.304	0.310	0.314	0.308
	Y	0.292	0.304	0.304	0.292		Y	0.316	0.328	0.328	0.316



YETDA INDUSTRY LTD.

Typical Electro-Optical Characteristics Curve:

Fig 1. Forward Current vs. Forward Voltage

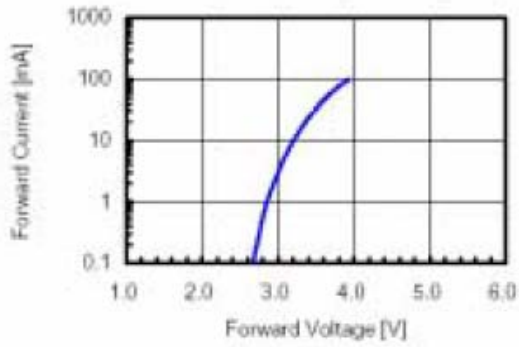


Fig 2. Relative Intensity vs. Forward Current

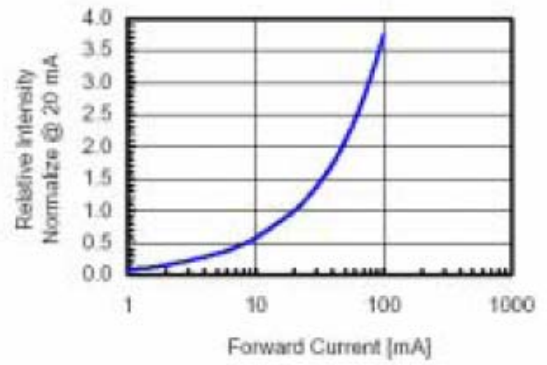


Fig 3. Forward Voltage vs. Temperature

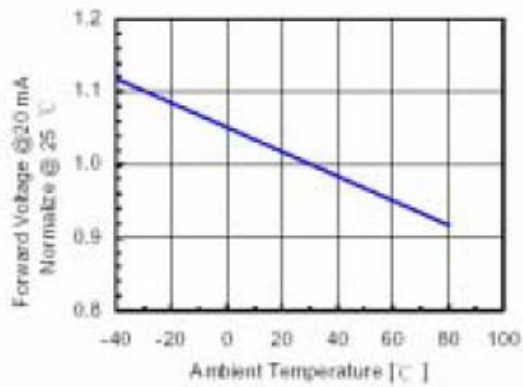
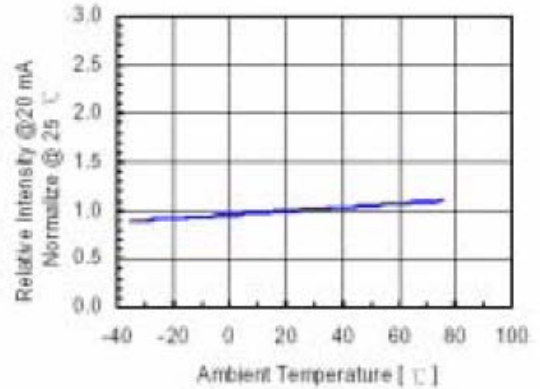


Fig 4. Relative Intensity vs. Temperature





YETDA INDUSTRY LTD.

•Soldering:

1. Manual of soldering

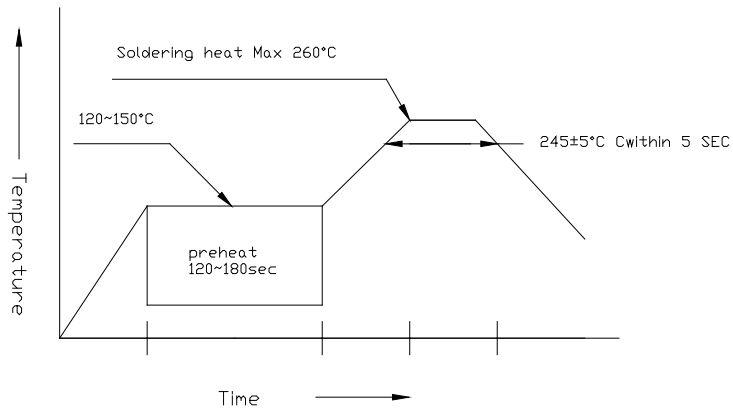
The temperature of the iron tip should not be higher than 260°C and

Soldering within 3 seconds per solder-land is to be observed

2. DIP soldering (Wave Soldering):

Preheating: 120°C~150°C within 5 sec. 260°C (Max)

Gradual Cooling (Avoid quenching)

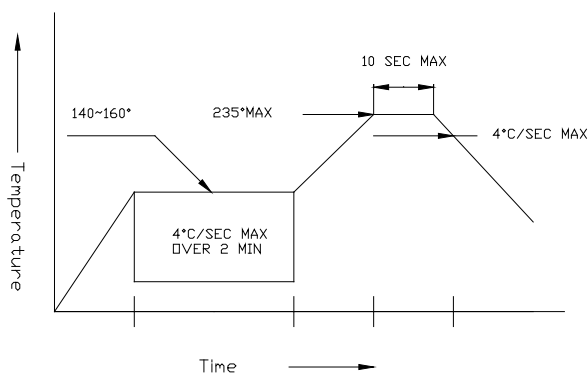


3. Reflow Soldering

Preheating: 140°C~160°C ±5°C, within 2 minutes.

Operation heating: 235°C (Max) within 10 seconds (Max)

Gradual Cooling (Avoid quenching)



•Handling:

Care must be taken not to cause to the epoxy resin portion of Yetda LEDS while it is exposed to high temperature.

Care must be taken not rub the epoxy resin portion of Yetda LEDS with hard or sharp article such as the sand blast and the metal hook