



YETDA INDUSTRY LTD.

S500TE4D 5mm Blueish Green Color LED Lamps

- * 5mm Blueish Green color with Super Bright Dice.
- * Encapsulated with Water Clear Package with 2 leads.

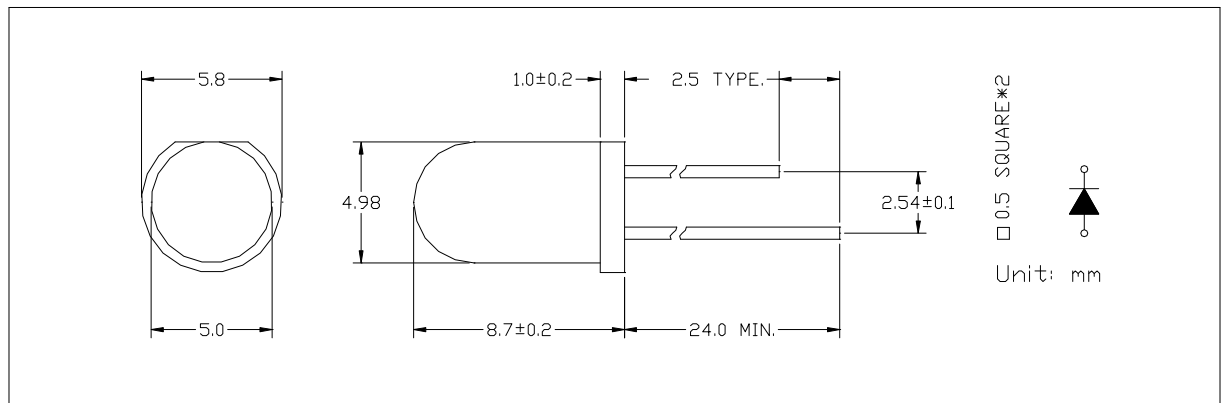
Absolute Maximum Ratings : (Ta=25°C)

Parameter	Symbol	Red	Yellow	Unit
Power Dissipation	PD	100	100	mw
Reverse Voltage	VR	5	5	V
Average Forward Current	LAF	30	30	mA
Peak Forward Current (Duty=0.1,10KHZ)	IPF	200	200	mA
Operatating Temperature Range	TOPR	-20°C to +80 °C		
Storage Temperature Range	TSTG	-40°C to +100 °C		
Lead Soldering Temperature { 1.6mm(0.063inch) From Body } 260°C For 3 Seconds				

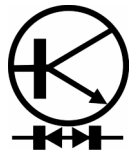
Electro-Optical Characteristics (Ta = 25°C)

Parameter	Test Condition	Symbol	Min.	Typ.	Max.	Unit
Forward Voltage Green	IF = 20mA	VF	2.8	3.2	3.8	V
Reverse Current	VR =5V	IR			10	uA
Luminous Intensity Green	IF = 20mA	Iv	13000		20000	mcd
Wavelength Green	IF = 20mA	λD	500	510	515	nm
Viewing Angle	IF = 20mA	2θ 1/2		30		deg

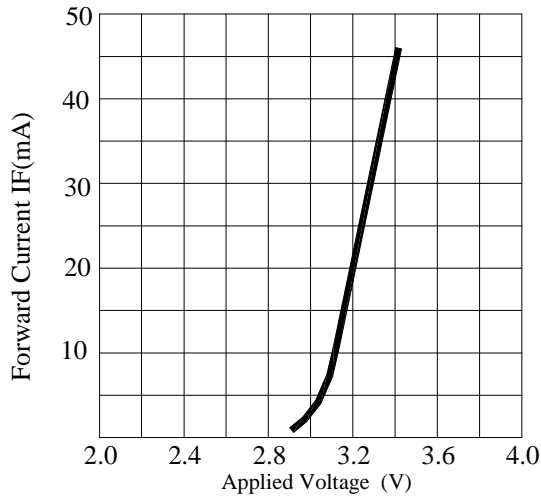
Item: 500



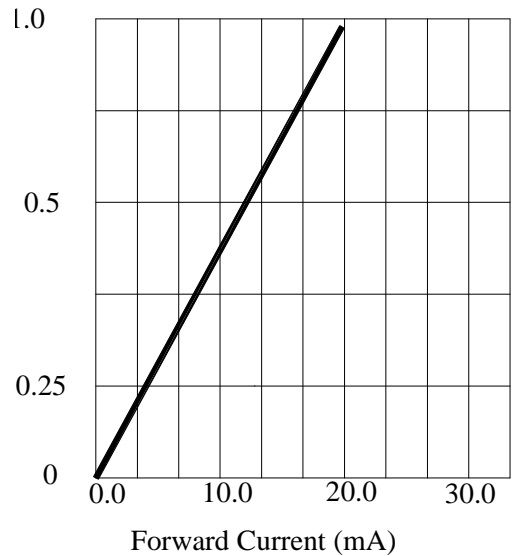
13MAY25S



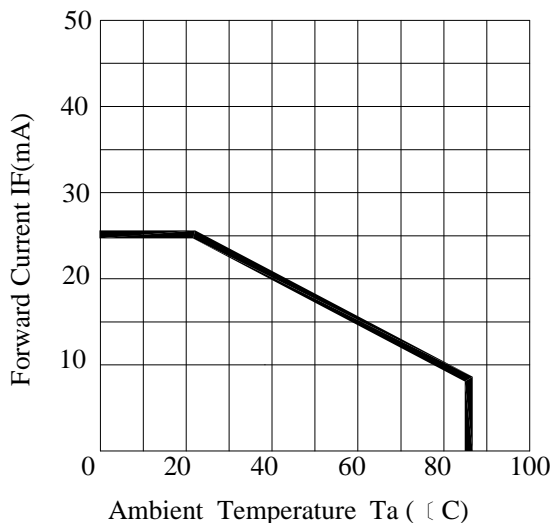
Typical Electrical / Optical Characteristics Curves



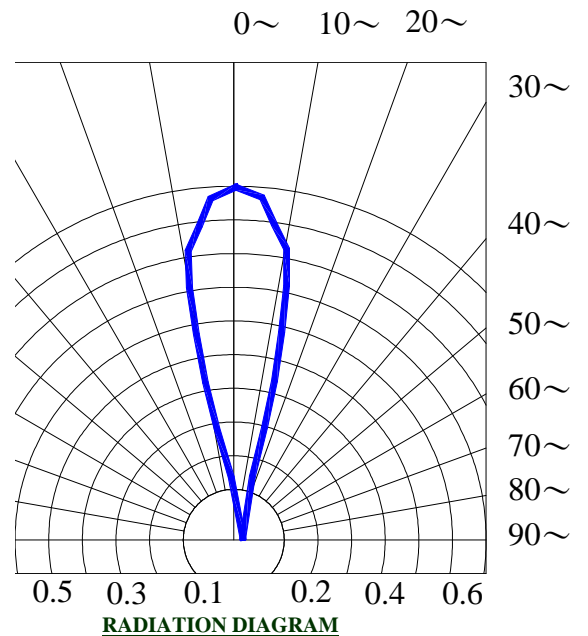
FORWARD CURRENT VS. APPLIED VOLTAGE



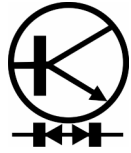
FORWARD CURRENT VS. LUMINOUS INTENSITY



AMBIENT TEMPERATURE VS. FORWARD CURRENT



RADIATION DIAGRAM



YETDA INDUSTRY LTD.

•Soldering:

1. Manual of soldering

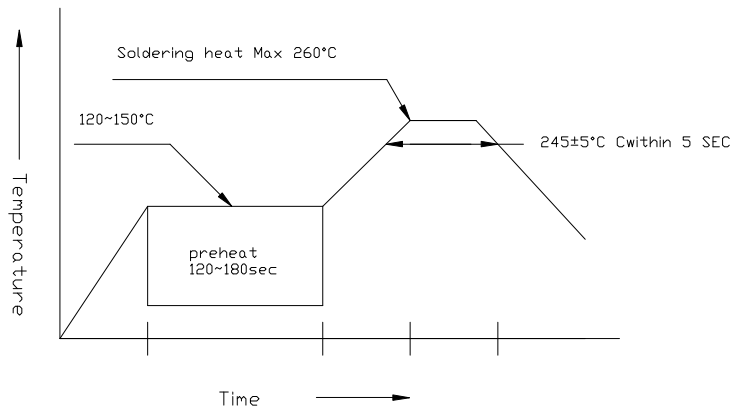
The temperature of the iron tip should not be higher than 260°C and

Soldering within 3 seconds per solder-land is to be observed

2. DIP soldering (Wave Soldering):

Preheating: 120°C ~ 150°C within 5 sec. 260°C (Max)

Gradual Cooling (Avoid quenching)

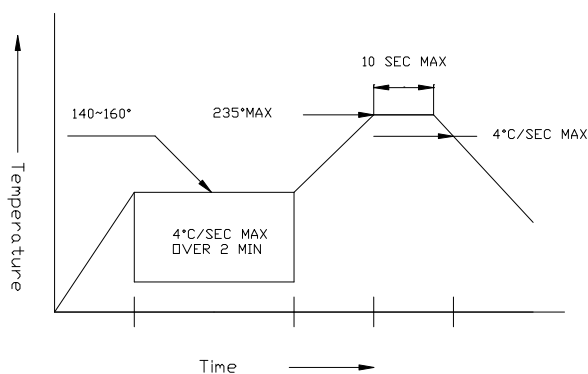


3. Reflow Soldering

Preheating: 140°C ~ 160°C ± 5°C, within 2 minutes.

Operation heating: 235°C (Max) within 10 seconds (Max)

Gradual Cooling (Avoid quenching)



•Handling:

Care must be taken not to cause to the epoxy resin portion of Yetda LEDS while it is exposed to high temperature.

Care must be taken not rub the epoxy resin portion of Yetda LEDS with hard or sharp article such as the sand blast and the metal hook