



# YETDA INDUSTRY LTD.

## 1W High Power LED(Star)Lambertian WW031F

1W High Power with Nature White Color  
Encapsulated with Water Clear Lens Package

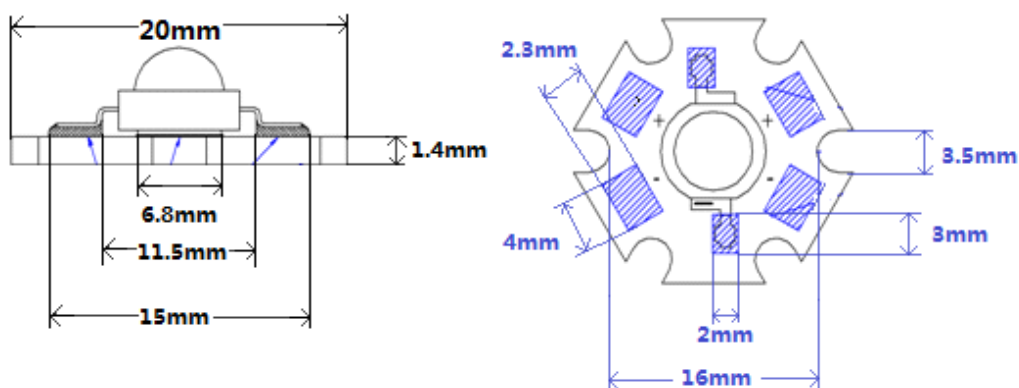
### Absolute Maximum Ratings :

Parameter	Maximum Rating	Unit
Peak Forward Current	400	mA
Operating Temperature Range	-30°C to +60°C	
Storage Temperature Range	-40°C to +90°C	
Lead Soldering Temperature	250°C for 3 seconds 1.6mm(0.063 inch) from body	

### Electro-Optical Characteristics (Ta = 25°C)

Parameter Radiant	Test Condition	Symbol	Min.	Typ.	Max.	Unit
Forward Voltage	IF = 350mA	Vf	3.0		3.8	V
Reverse Current	VR = 5V	Ir			10	uA
Luminous Intensity	IF = 350mA	Iv		70		lm
Color Temperature	IF = 350mA	λ d	2700		3000	nm
Viewing Angle	IF = 350mA	2 θ1/2		140		deg

### Package



Unit: mm

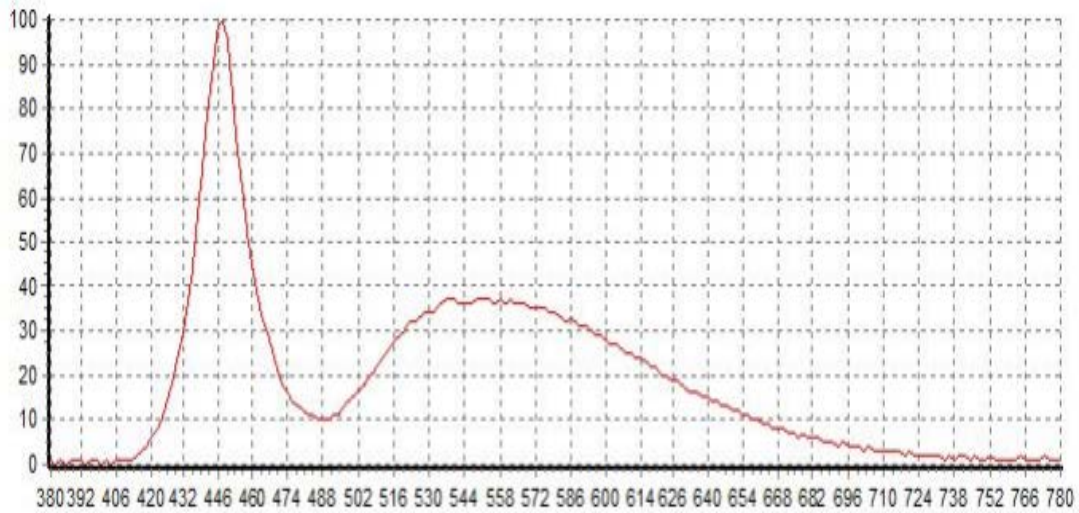
2017JUL6Y



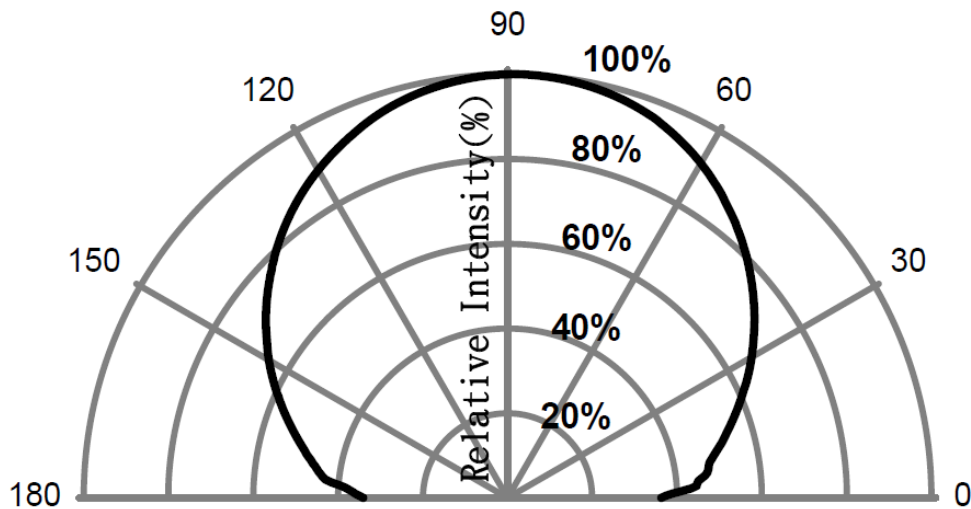
YETDA INDUSTRY LTD.

### Electrical/Optical Characteristics Curves

LED emission spectrum



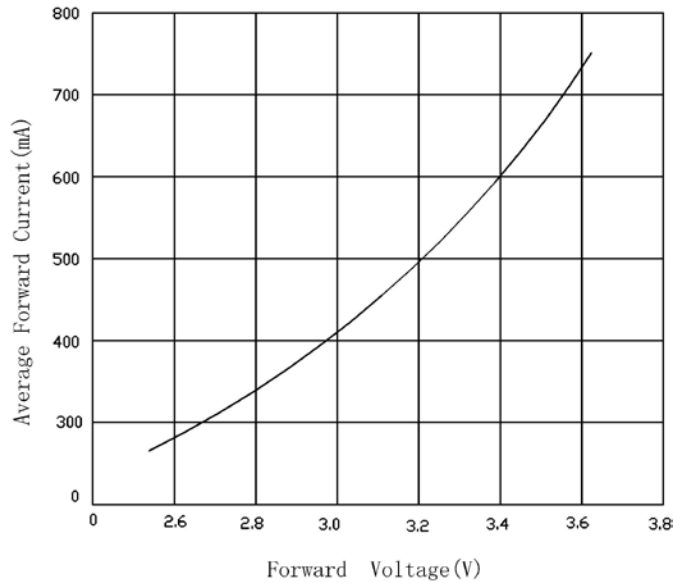
Typical radiation distribution



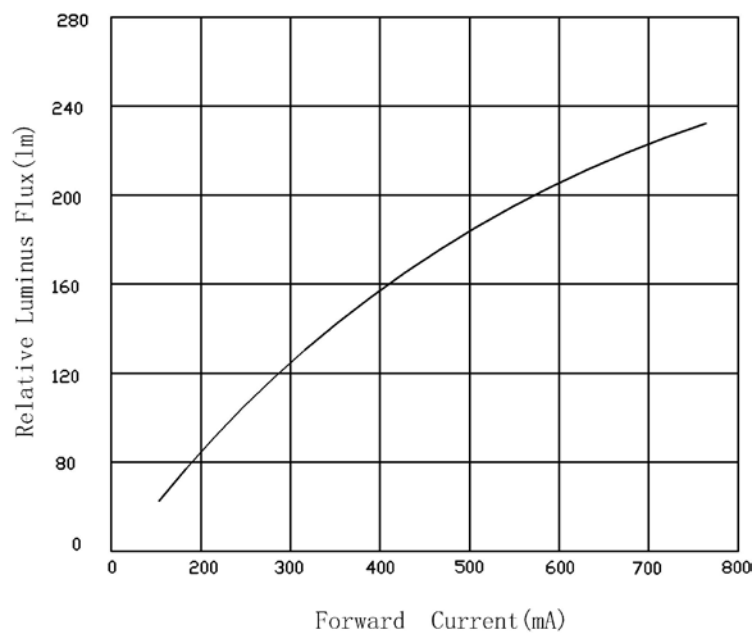


# YETDA INDUSTRY LTD.

## Electrical parameters characteristic



## Forward Current



\*IFP Conditions : Pulse Width $\leq$ 10msec duty $\leq$ 1/10

\* All high power emitter LED products mounted on aluminum metal-core printed circuit board, can be lighted directly, but we do not recommend lighting the high power products for more than 5 seconds without a appropriate heat dissipation equipment.

\* Re-flow, wave peak and soak- stannum soldering etc.is not suitable for this products.

\* Suggest to solder it by professional high power LED soldering machine.

\* Can use invariable-temperature searing-iron with soldering condition: $\leq$ 260 degree less than 3 seconds.